



## Eaglehook C-lock Fall Protection





## From the Inventor

I used to be what you might call a trailer cowboy. Back in the day, I'd climb up the hinges of trailer doors to get onto the roof; no harness, no second thought. It was just the way things were done. But as the years went on, I started to see things differently. I saw too many close calls, too many injuries that could have been prevented. That's when it hit me: It wasn't worth it. There had to be a better way.

Safety isn't just a regulation, it's a responsibility. It's about making sure every worker gets home to their family at the end of the day. That's what drives everything we do at Eaglehook. Our fall protection system isn't just another piece of equipment; it's a commitment to the people who keep the transportation industry moving.

We built Eaglehook to be strong, reliable, and easy to use—because the best safety solutions are the ones that actually get used. Whether you're working in a maintenance bay or out on the road, this system was designed to move with you, adapting to the realities of your work without slowing you down.

At Eaglehook, we take pride in what we build, but more importantly, we take pride in the culture we're creating. A culture where safety is never an afterthought. Where innovation meets practicality. And where we refuse to accept that workplace injuries are just part of the job.

This catalog isn't just about a product—it's about a philosophy. It's about protecting your workforce, strengthening your company, and elevating industry standards.

Thanks for being a part of this mission.

# STOP AN INJURY Before it Happens

Falls from a height remain the leading cause of fatal accidents and serious injuries in the workplace. One of the primary culprits is a lack of suitable safety equipment.

The Eaglehook® Fall Protection System is a mobile fall protection system. It offers full fall prevention with the ease, economy and flexibility of modular installation.

The Eaglehook's adaptable mounting system ensures a secure installation across various trailer roof designs, providing reliable fall protection in diverse work environments. It is particularly effective for tasks requiring short free fall distances, such as maintenance on dry van and reefer trailers where low ground clearance is a concern. Additionally, its lightweight, precision-engineered design allows for smooth, hands-free movement along the trailer, ensuring maximum safety and efficiency for workers operating at height.

## THE SYSTEM THAT MAKES SENSE

### Easier installation

Unlike traditional fall protection systems, Eaglehook is designed for quick and hassle-free installation. With its lightweight, modular design, it can be easily implemented using standard trailer measurements and secured in place without the need for complex modifications. Built with off-the-shelf components, Eaglehook ensures that your team stays protected with minimal downtime and no disruption to your workflow.

### Less expense

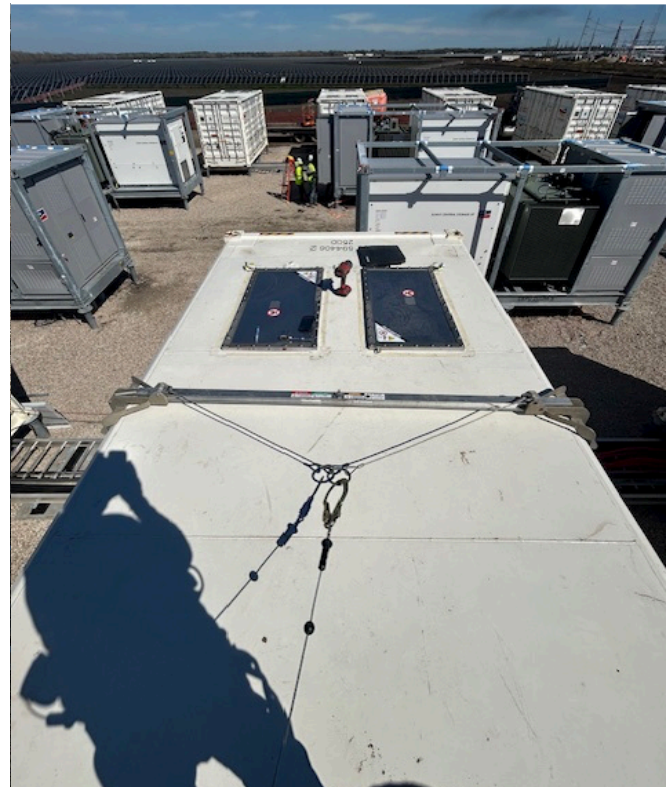
With standard use and routine maintenance, Eaglehook is built for long-term durability and reliability. Constructed from high-strength aluminum, it is designed to withstand harsh working conditions while maintaining its structural integrity. Its corrosion-resistant materials ensure a long service life, making it a dependable fall protection solution for both indoor and outdoor applications.

### A safer system

The Eaglehook system's complex design stops a fall before it happens. This reduces the chance of worker injury and damage to sensitive equipment.

### Peace of mind

Safety is one area where no company can afford to go wrong. Eaglehook was designed and created by professional engineers and is backed by a global network of support. Rigorous testing to global standards has been completed in our internationally recognised test facility.



# The ABC's Of Fall Protection

Every effective fall protection system is built on three key components: Anchorage, Body Support, and Connection. Eaglehook delivers on all three, ensuring your team stays safe and secure at elevated work areas.



## Anchorage

The Eaglehook aluminum anchor ends are crafted from high-density, industrial-grade aluminum. Designed to withstand 2,400 lbs of arresting force, they provide a rock-solid foundation for your fall protection system.



## Body Support

Our custom-designed harnesses prioritize both comfort and security, ensuring workers can move freely while staying protected. Built for durability, they keep your team safe without compromising mobility.



## Connection

Eaglehook's ½-inch oval rings are engineered to withstand 5,000 lbs of force, providing a reliable link between anchorage and body support. With uncompromising strength, they're built to handle the toughest conditions.

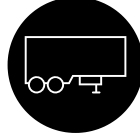


### IS EAGLEHOOK RIGHT FOR YOUR Company?

More often than not, fleet maintenance and repairs can't always happen in the shop. The Eaglehook system is designed for on-the-go fall protection, providing a lightweight, mobile solution for trailer roof access wherever the job takes you. Whether you're performing roadside repairs, servicing trailers in a yard, or handling seasonal snow removal, Eaglehook delivers exceptional safety without the need for a fixed installation, ensuring your team stays protected in any environment.



Snow



In The Yard



On the Road



Repair



Maintenance

## EAGLEHOOK AT A GLANCE

FEATURE	BENEFIT
Eaglehook is a Mobile fall protection device.	Allows workers to work where ever when ever.
Fast & Easy Setup	Installs in minutes without permanent modifications
Versatile Applications	Ideal for trailer maintenance, repairs, and snow removal
Strong & Reliable	Engineered to withstand 2,400 lbs of arresting force
Compliance & Safety	Meets ANSI Z359 & CSA Z259 standards for fall protection
Eaglehook is tested to global standards	Offers you peace of mind that your system has been tested and engineered to high standards, backed by a global brand



**Eaglehook**  
71 Innovation Drive  
Woodbridge, Ontario  
L4H 0S3

**Tel:** +1 844 6779622

**Email:** [info@Eaglehook.com](mailto:info@Eaglehook.com)

**Web:** [Eaglehook.com](http://Eaglehook.com)